



Marine Safety Information Bulletin

U.S. Coast Guard
Sector Charleston
Waterways Management Division
196 Tradd Street
Charleston, SC 29401
E-Mail: D07-PF-SECTORCHASN-WWM@uscg.mil

MSIB Number: 23-17
Date: August 9, 2017

BEN SAWYER DRAW BRIDGE MAINTENANCE Sullivans Island, SC

The South Carolina Department of Transportation will be conducting maintenance on the Ben Sawyer Draw Bridge located near mile marker 460 in the Intracoastal Waterway. The bridge will be closed for vessel navigation from 9 p.m. on August 14, 2017 through 5 a.m. on August 15, 2017. The bridge will open on the top of the hour from 9 a.m. to 4 p.m. on August 17, 2017 and August 18, 2017.

Mariners are urged to plan transits accordingly to avoid unnecessary disruptions.

For more details, please contact project manager John Bergman at: (843) 302-7442.

For Coast Guard related issues please contact Sector Charleston Waterways Management Division at: (843) 740-3188 or our 24-hour Command Center Line at: (843) 740-7050.

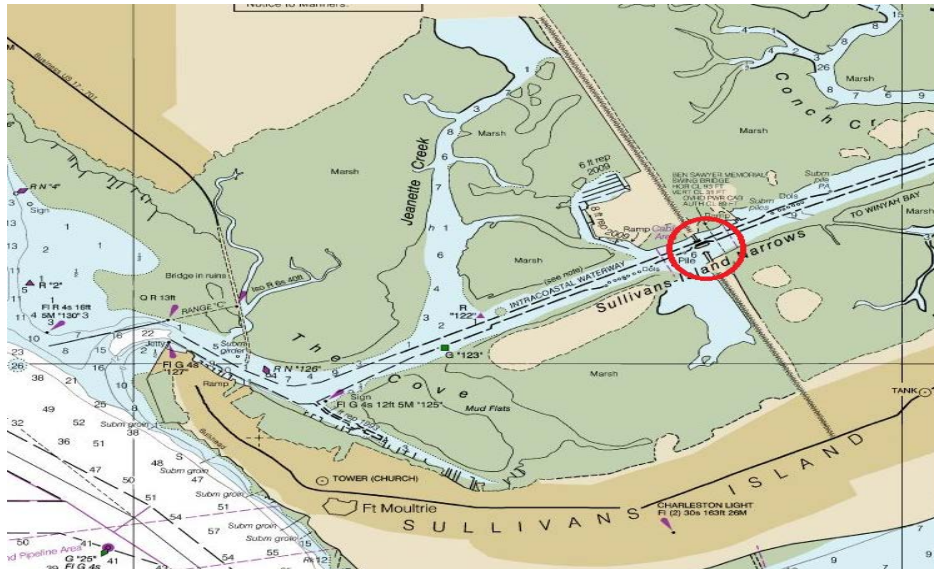


CHART 11521 - CHARLESTON HARBOR AND APPROACHES