

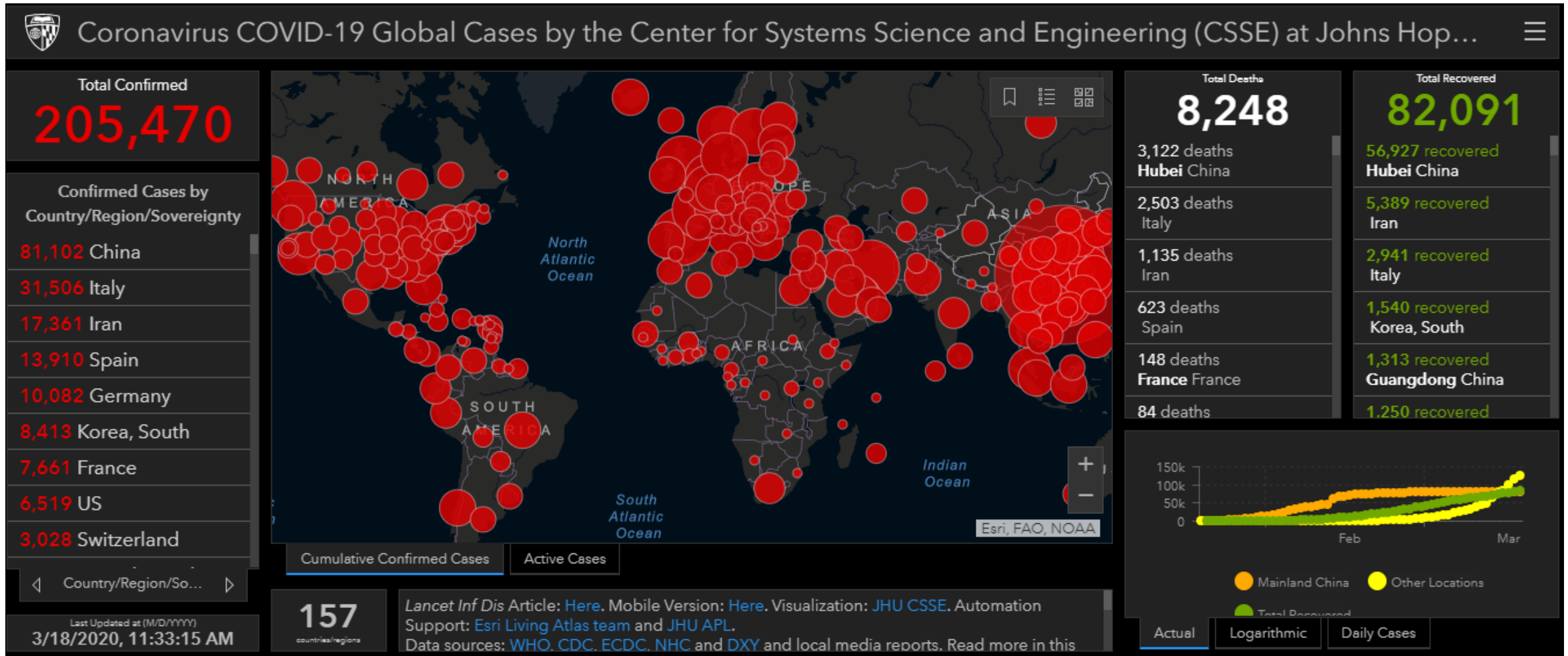
**COVID-19**

**Wednesday, March 18, 2020**

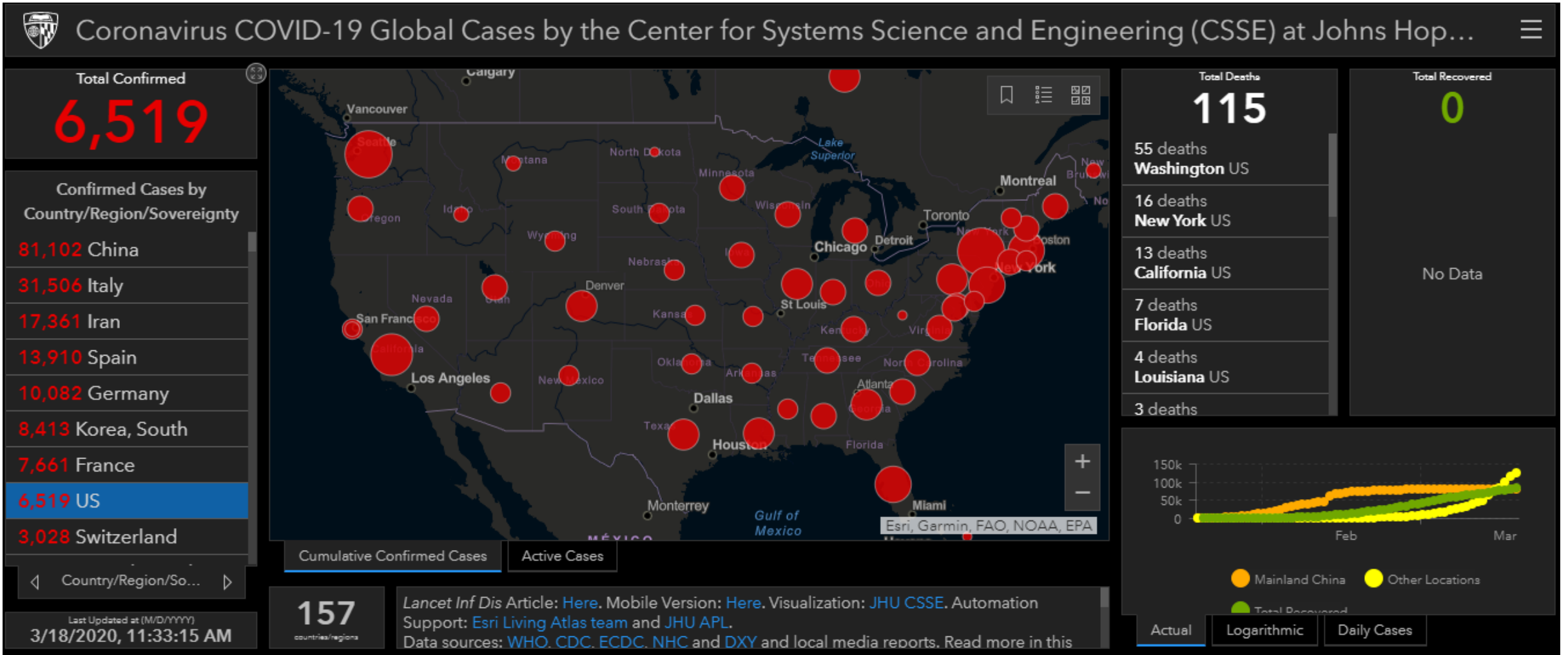
**1200**



# Global COVID-19 Statistics



# United States COVID-19 Statistics



# United States COVID-19 Confirmed Cases

| State       | Cases | State         | Cases | State          | Cases | State                | Cases |
|-------------|-------|---------------|-------|----------------|-------|----------------------|-------|
| Alabama     | 39    | Indiana       | 30    | Nebraska       | 24    | South Carolina       | 47    |
| Alaska      | 6     | Iowa          | 29    | Nevada         | 56    | South Dakota         | 11    |
| Arizona     | 21    | Kansas        | 18    | New Hampshire  | 26    | Tennessee            | 78    |
| Arkansas    | 22    | Kentucky      | 27    | New Jersey     | 267   | Texas                | 132   |
| California  | 718   | Louisiana     | 196   | New Mexico     | 23    | Utah                 | 51    |
| Colorado    | 185   | Maine         | 32    | New York       | 1717  | Vermont              | 17    |
| Connecticut | 68    | Maryland      | 60    | North Carolina | 66    | Virginia             | 67    |
| Delaware    | 16    | Massachusetts | 218   | North Dakota   | 5     | Washington           | 1014  |
| Florida     | 217   | Michigan      | 66    | Ohio           | 67    | West Virginia        | 1     |
| Georgia     | 147   | Minnesota     | 60    | Oklahoma       | 19    | Wisconsin            | 90    |
| Hawaii      | 14    | Mississippi   | 22    | Oregon         | 68    | Wyoming              | 15    |
| Idaho       | 9     | Missouri      | 16    | Pennsylvania   | 115   | District of Columbia | 31    |
| Illinois    | 161   | Montana       | 10    | Rhode Island   | 23    | Puerto Rico          | 5     |

# SCEOC Operations State of Emergency

## SCEMD Operations

SEOC Limited Activated OPCON 2

24 Counties @ OPCON 3

21 Counties @ OPCON 2

1 Counties @ OPCON 1

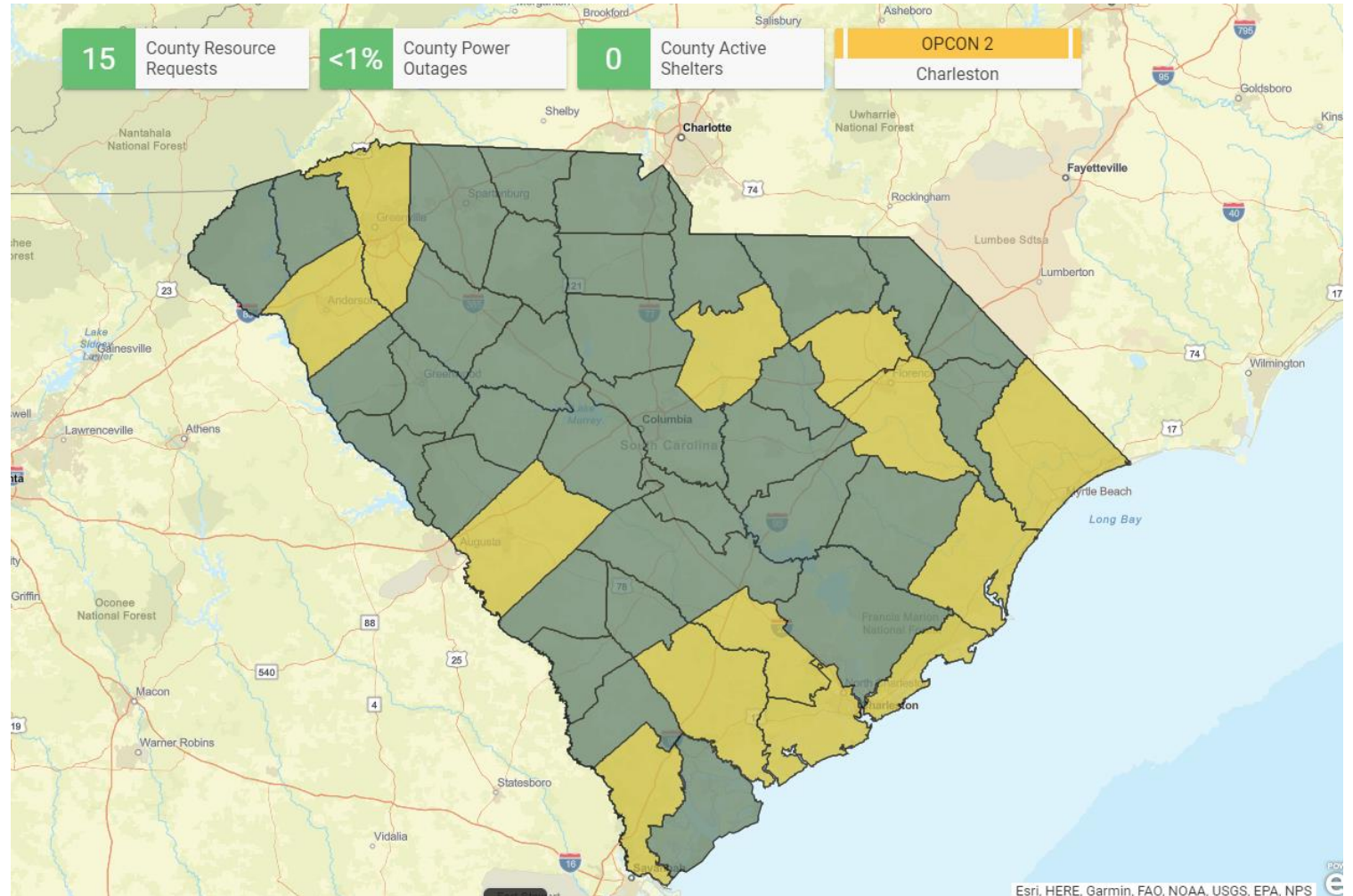
0 Shelters Open

207 Resource Requests Statewide

<1% Power Outages

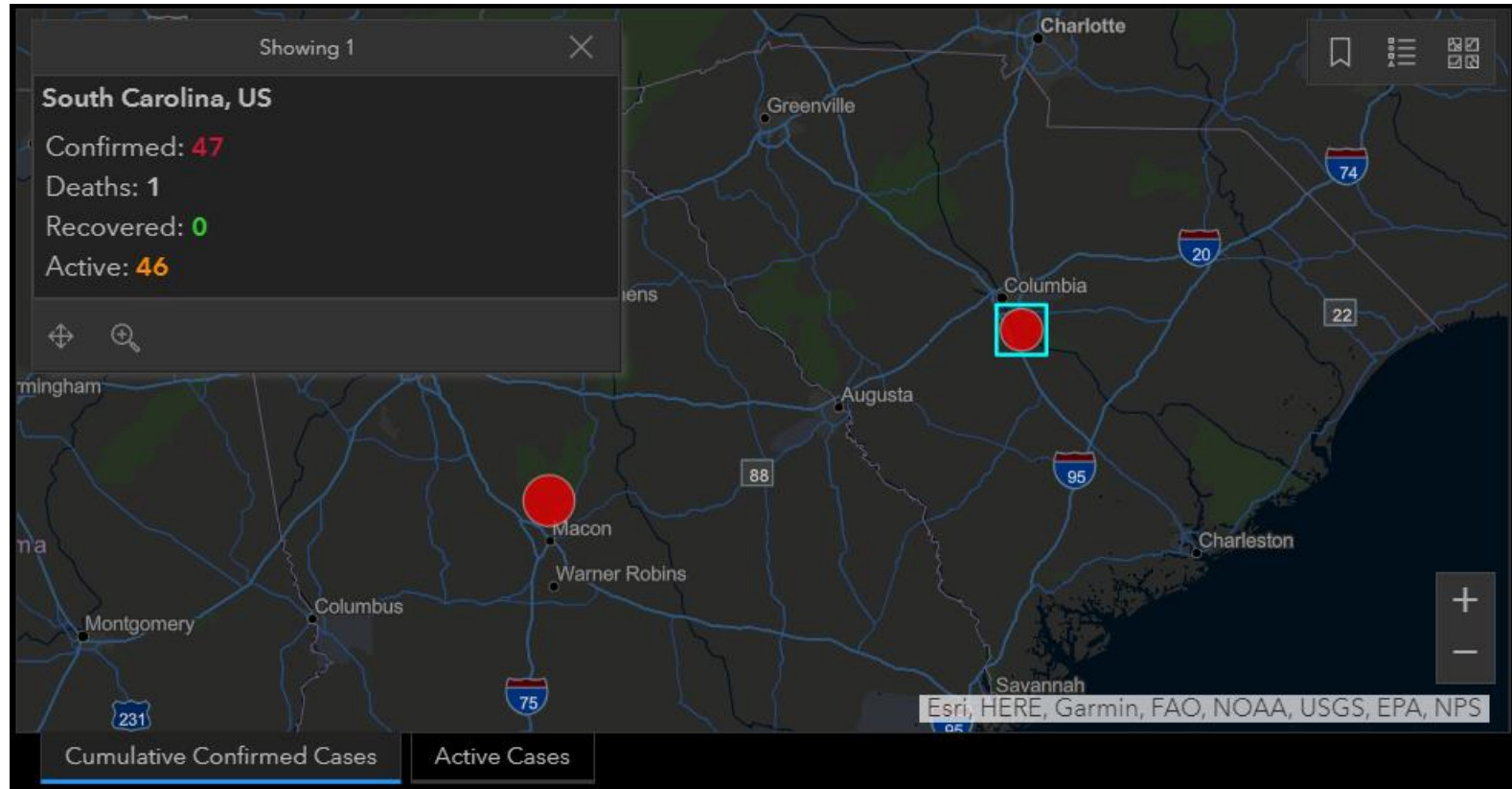
47 COVID-19 Patients

All Public Schools Closed



Updated: 1200 3/18/2020

# South Carolina COVID-19 Statistics



| Testing/Monitoring   | Cases |
|----------------------|-------|
| Negative Tests       | 409   |
| Positive Tests       | 47    |
| Completed Monitoring | N/A   |
| Currently Monitoring | N/A   |
| Confirmed Deaths     | 1     |
| Recovered Patients   | 0     |

# South Carolina County COVID-19 Statistics

| County       | Cases |
|--------------|-------|
| Abbeville    | 0     |
| Aiken        | 0     |
| Allendale    | 0     |
| Anderson     | 2     |
| Bamberg      | 0     |
| Barnwell     | 0     |
| Beaufort     | 4     |
| Berkeley     | 0     |
| Calhoun      | 1     |
| Charleston   | 3     |
| Cherokee     | 0     |
| Chester      | 0     |
| Chesterfield | 0     |

| County     | Cases |
|------------|-------|
| Clarendon  | 0     |
| Colleton   | 0     |
| Darlington | 0     |
| Dillion    | 0     |
| Dorchester | 0     |
| Edgefield  | 0     |
| Fairfield  | 1     |
| Florence   | 0     |
| Georgetown | 0     |
| Greenville | 2     |
| Greenwood  | 0     |
| Hampton    | 0     |
| Horry      | 4     |

| County     | Cases |
|------------|-------|
| Jasper     | 0     |
| Kershaw    | 22    |
| Lancaster  | 2     |
| Laurens    | 0     |
| Lee        | 0     |
| Lexington  | 3     |
| Marion     | 0     |
| Marlboro   | 0     |
| McCormick  | 0     |
| Newberry   | 0     |
| Oconee     | 0     |
| Orangeburg | 0     |
| Pickens    | 0     |

| County       | Cases |
|--------------|-------|
| Richland     | 1     |
| Saluda       | 0     |
| Spartanburg  | 1     |
| Sumter       | 0     |
| Union        | 0     |
| Williamsburg | 0     |
| York         | 1     |
| Statewide    | 47    |

<https://www.scdhec.gov/news-releases/dhec-announces-additional-nine-cases-2019-novel-coronavirus-south-carolina>

Updated: 1200 3/18/2020

# Charleston County EOC Operations

## CCEMD Operations

EOC Limited Activated OPCON 2 @ PSB  
-Limited Access to Emergency Services Building (ESB-EOC/CDC)  
-Citizen's Information open from 0900 - 1700 Monday - Friday.  
-County Government Open  
-Charleston County School District Closed

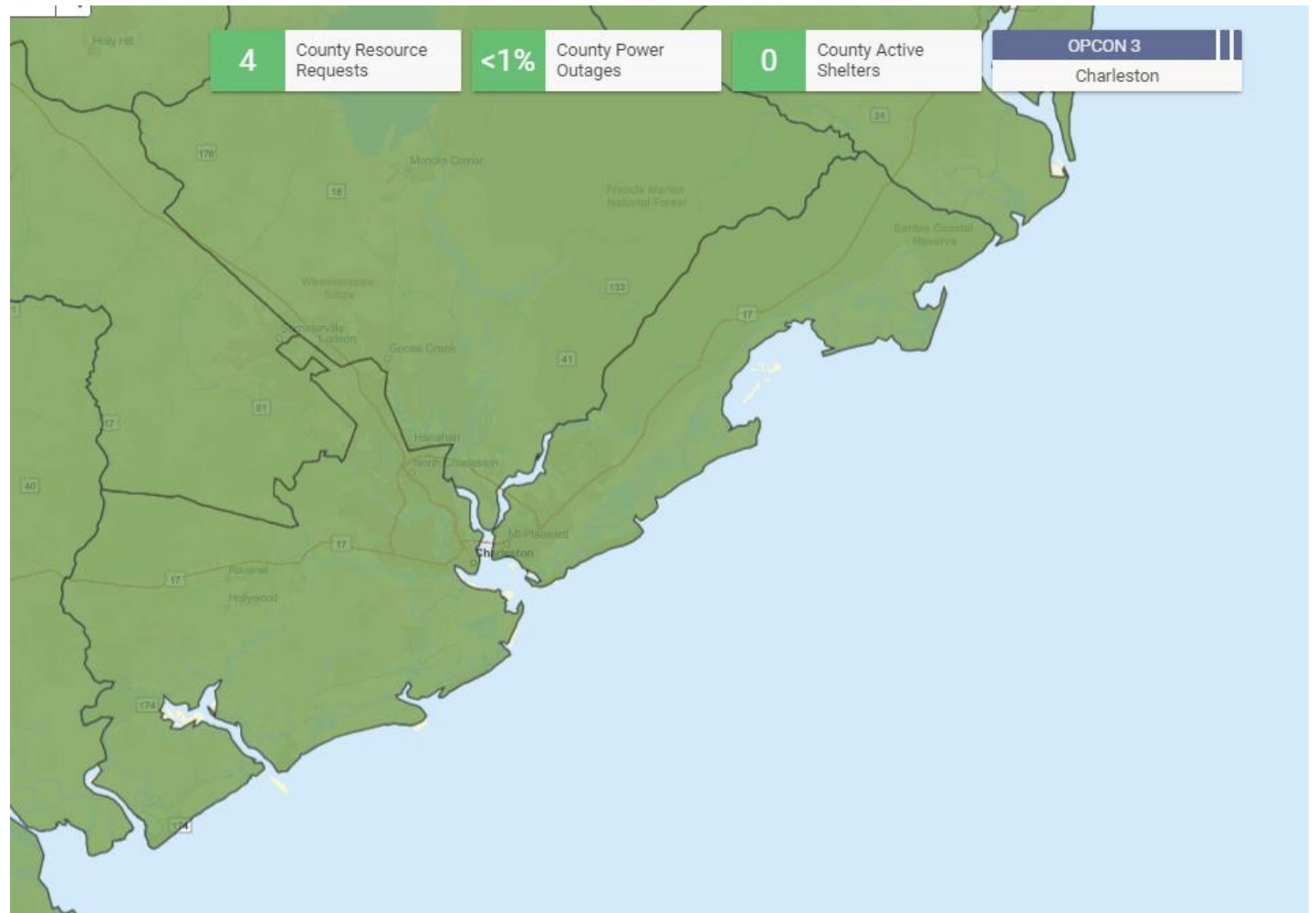
All Municipalities Open

0 Shelters Open

8 Active Resource Requests

3 COVID-19 Patient

No Unmet Needs



Updated: 1200 3/18/2020